

A photograph of two men standing in a golden field, possibly a farm. The man on the left is wearing a light blue shirt and jeans, holding a tablet. The man on the right is wearing a blue shirt, jeans, and a hat, holding a piece of straw. Overlaid on the image are three blue rectangular boxes containing the text 'Business', 'transition', and 'planning' respectively. The word 'Agriculture' is written in the bottom left corner of the image area.

Business

transition

planning

Agriculture

Preparing for the eventual transition of your business

When it comes to successfully planning for your future, identifying the challenges you need to meet is step one.

Are you:

- Planning for an upcoming exit or transition in management?
- Experiencing rapid and sometimes unexpected business growth?
- Weighing the importance of family involvement in management versus ownership?
- Confident in your financial future and ability to meet your retirement needs?
- Evaluating your insurance policies to make sure they are the most cost-effective?

Lay the groundwork for success — and for future generations

Farm, ranch and related agribusiness owners face complex transition issues that require deep experience and perspective. With a methodology built and refined by working with ag producers, Wipfli's Business Transition Group (BTG) brings you the experience you need in corporate, strategic, succession and business transition planning; human capital consulting; M&A consulting; valuation; wealth management*; and tax and corporate finance.

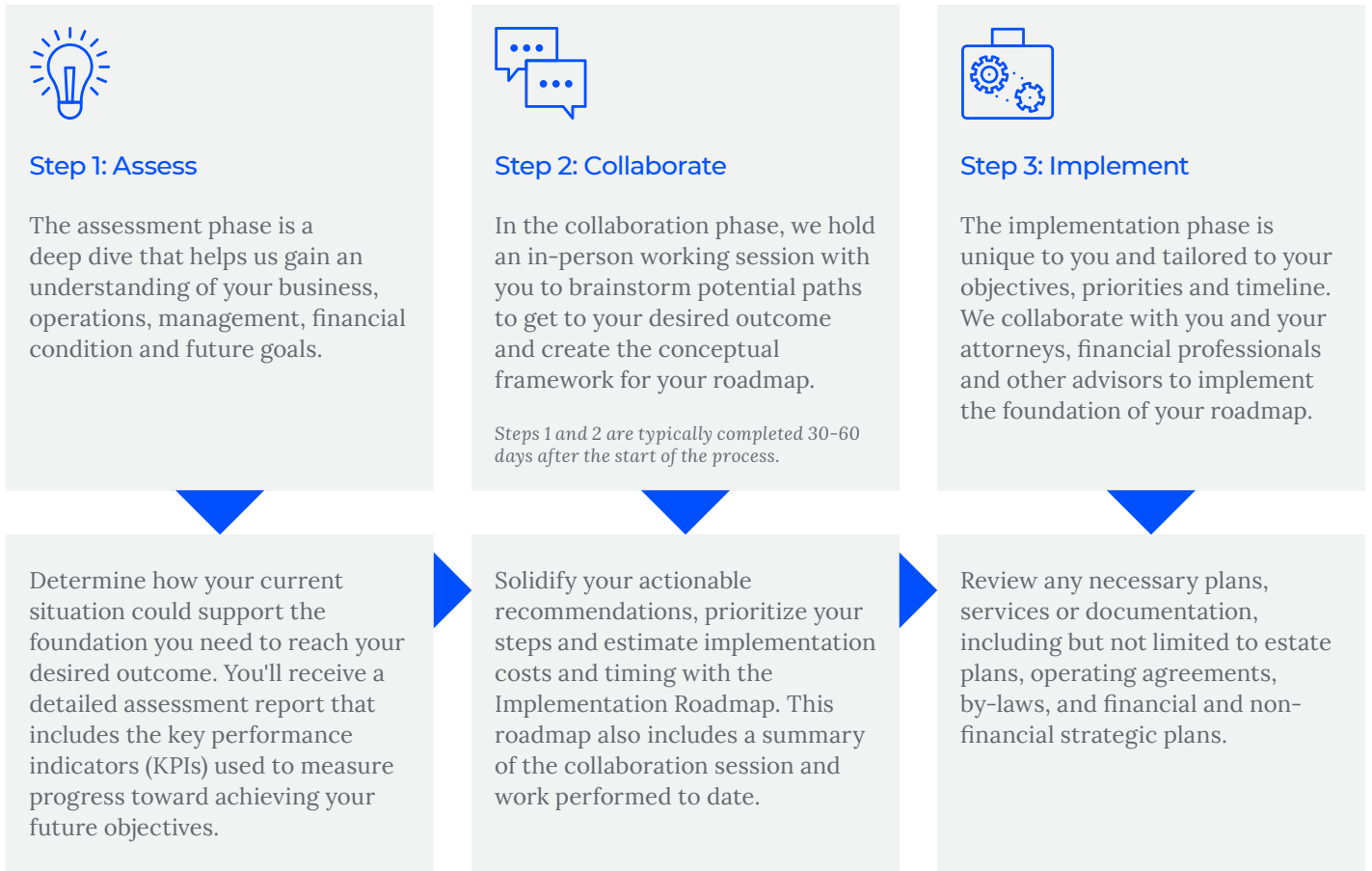
The most successful transitions are prepared well in advance and involve a wide range of considerations. Have you thought about what would happen if you were suddenly unavailable on a temporary or permanent basis? Do you have tax-efficient financial strategies in place for your family's legacy and to care for the next generation? What could you achieve if you had a clearly defined roadmap for your business's future?

With this kind of roadmap, you can gain peace of mind knowing that your farm, ranch or related agribusiness will continue well into the future.

WIPFLI

Build a lasting legacy

Create your unique roadmap with Wipfli's proven three-step process:



Puts your what-ifs to rest

Work with a partner who listens to you, understands your unique goals and helps you navigate transition complexities. With a deep understanding of the agricultural industry, Wipfli's BTG team offers diverse, specialized knowledge and experience to help you achieve your goals, while making the process easier for you and providing an objective point of view.

Our team also thinks beyond your business to your personal legacy. Whether it's through personal financial planning, investment advisory or risk management solutions, we can work with you to look at your full financial picture and give life to your goals.*

Let's get started

When you evaluate your assets and determine your best strategy long before you're ready to transfer ownership, you set future generations up for success. Contact Wipfli today to get started with your business transition planning.

wipfli.com/agtransition

* Wipfli Financial Advisors, LLC ("Wipfli Financial") is an investment advisor registered with the U.S. Securities and Exchange Commission (SEC); however, such registration does not imply a certain level of skill or training and no inference to the contrary should be made. Wipfli Financial is a proud affiliate of Wipfli LLP, a national accounting and consulting firm. Information pertaining to Wipfli Financial's management, operations, services, fees and conflicts of interest is set forth in Wipfli Financial's current Form ADV Part 2A brochure and Form CRS, copies of which are available from Wipfli Financial upon request at no cost or at www.adviserinfo.sec.gov. Wipfli Financial does not provide tax, accounting or legal services.