



ExpenseConnect for Microsoft Dynamics SL

What is ExpenseConnect?

SAP Concur adds a lot of value to your organization, but getting data from Concur into Microsoft Dynamics SL is frustrating and time-consuming. You have to export hundreds of data columns and then manually parse and format the data so it can be uploaded into Dynamics SL.

All this manual downloading, manipulating and reuploading of data increases the likelihood of errors.

That's why we've developed ExpenseConnect. A prepackaged cloud-to-cloud integration product, ExpenseConnect uses Dynamics SL Web Services to automatically pull expense reports from Concur Expense and integrate them into Dynamics SL – drastically simplifying and streamlining the process.

ExpenseConnect can easily accommodate currency transactions, as well as multi-company deployments of Dynamics SL. Corporate card payments made through Concur Expense Pay flow through the integration process, and non-reimbursable expenses are handled with ease.

How does it work?

Built to be flexible yet secure, ExpenseConnect allows you to define the data mapping from Concur Expense to Dynamics SL. The mapping functionality is easy to use and doesn't require costly custom development efforts. You can integrate expense reports from Concur Expense into any of the following modules within Dynamics SL:

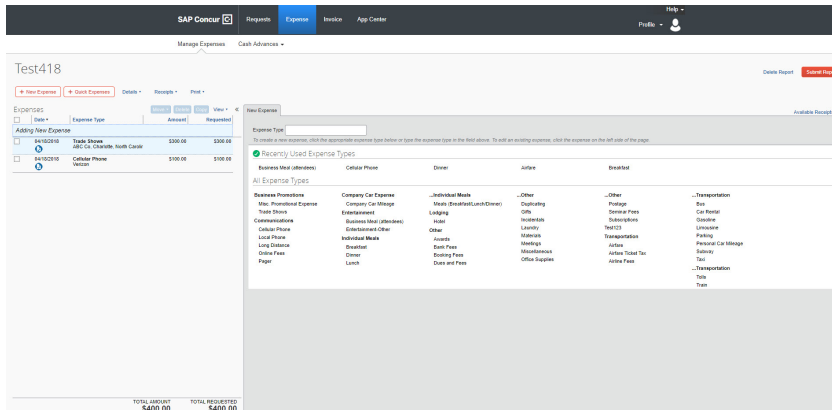
- General ledger (journal entry)
- Accounts payable (payables transaction)
- Project accounting (employee expense entry)
- Intercompany transactions
- Analytical accounting

ExpenseConnect also integrates with third-party applications and add-ons, such as Binary Stream's Multi-Entity Management, MC2's Advanced Intercompany Transactions and Nolan Intercompany Postings.

WIPFLI

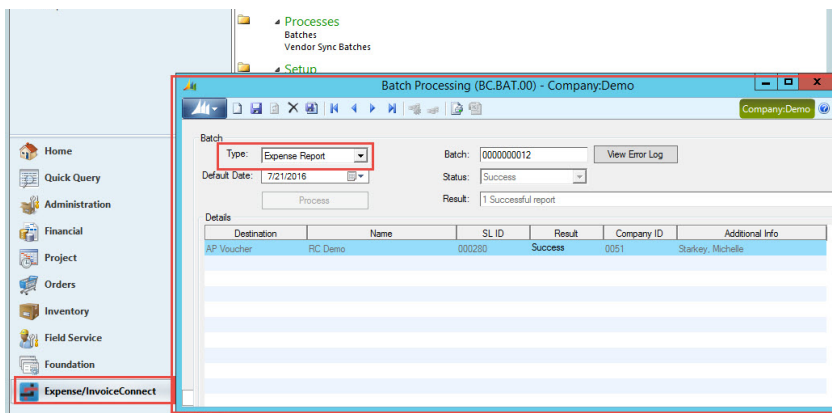
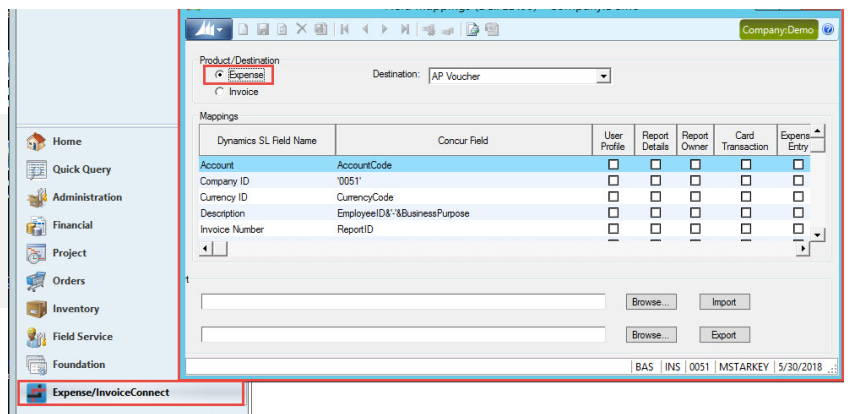
The ultimate Concur integration tool

Because ExpenseConnect is built into the Dynamics SL environment, you don't have to switch between applications and can keep working in SL. Great news, right? Here's a little more info on how ExpenseConnect works:



Employees continue to easily input expense and travel information into Concur Expense.

All integration settings and data mappings are defined within your Dynamics SL environment.



Seamless integration generates the appropriate documents and transactions within Dynamics SL.

Let's get started

Contact Wipfli to learn more about ExpenseConnect and view a free demo.

wipfli.com/Concur